

The Bridge

MQTT

KNX

Modbus

BACnet

M-Bus

LoRaWAN

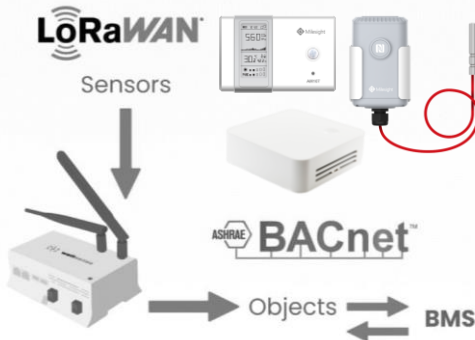


Universal IoT Gateway

Collect data on-premises or through your private Cloud network

The **Bridge** makes integrations into conventional Building Management and SCADA Systems (BMS) easy & intuitive.

The **Bridge** supports ON-SITE mapping of LoRa device data to BACnet IP, Modbus IP & MQTT.



Beside LoRa, **Bridge** supports integration of protocols such as: M-BUS, KNX, LON IP, Modbus IP/RTU and BACnet IP.

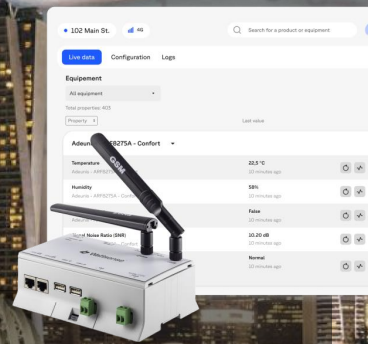
The **Bridge** enables with its built-in SIM & cloud console remote easy configuration & commissioning functionality.

The **Bridge** library supports:

- An impressive range of more than 700 devices.
- Automated decoding of LoRa payloads locally in the **Bridge** to take advantage of emerging wireless technologies.

Integration to BMS is done via well-known technologies such as BACnet IP and Modbus IP and/or to your private cloud network via MQTT

The Bridge

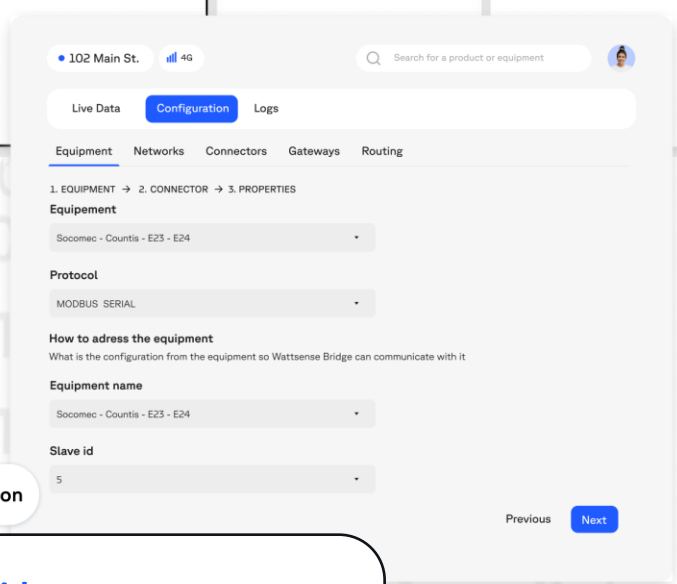


Universal IoT Gateway

Collect data on-premises or through your private Cloud network

Bridge one-off licenses

IoT	Small	Most popular Medium	Large	XLarge
Take the first step into IoT integration	Digitally transform small buildings	Scale with more data access	Take building management to the next level	The full power of the Wattsense Bridge
IN protocol (client) LoRaWAN	IN protocols (client) LON LPB KNX Dematic	Everything in Small, plus	Everything in Medium, plus	Everything in Large, plus
OUT protocols (server) BACnet IP Modbus TCP MQTT	OUT protocols (server) BACnet IP Modbus TCP MQTT	IN protocols (client) LoRaWAN	Connected In points 1 000	Connected In points 5 000
Other features Configuration Wizard 4G modem	Other features Configuration Wizard 4G modem	Connected In points 250		
Connected In points 100	Connected In points 100			



The **Bridge** licenses includes built-in SIM and free of charge remote configuration and commissioning functionality via the a Cloud console.

Specifications are according to the manufacturer and might change without any notice

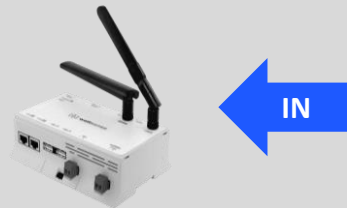

The Bridge



Universal IoT Gateway

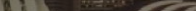
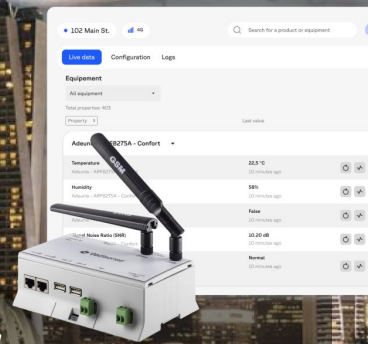
Collect data on-premises or through your private Cloud network



IN Protocols (Client) <ul style="list-style-type: none">LoRaWANBACnet IPModbusKNXM-BUSLONLPBDiematic 	OUT Protocols (Server) <ul style="list-style-type: none">BACnet IPModbus IPMQTT 
Interfaces <ul style="list-style-type: none">LoRaWAN module 863MHz to 928MHzKNXM-BusLPB/BSB3G/4G Modem2 Ethernet ports RJ452 RS4852 USBUSB Micro	Drivers <ul style="list-style-type: none">LoRaWAN 1.0 local privateBACnet IP, BACnet IP ServerModbus TCP/IPMQTT ClientKNX S and LTEModbus RTULON FT10, LON IP-852M-BuswM-BusLPBDiematic
Software <ul style="list-style-type: none">Secured Linux Yocto distributionOnboard LoRaWAN server decodes LoRa data <u>locally</u> directly in the BridgeAutomatic discovery of BACnet objectsEasy configuration via remote consoleScheduler wizard	Security <p>THE Bridge optionally connects to your MQTT broker with highest level of security based on SSL/TLS, with the following properties:</p> <ul style="list-style-type: none">Two-way authentication between the Bridge and server with x509 certificatesEnd-to-end encryption, integrity checks

Specifications are according to the manufacturer and might change without any notice

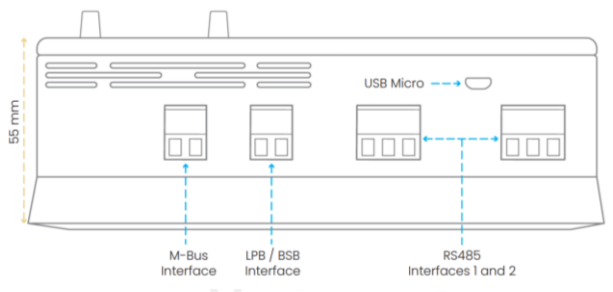
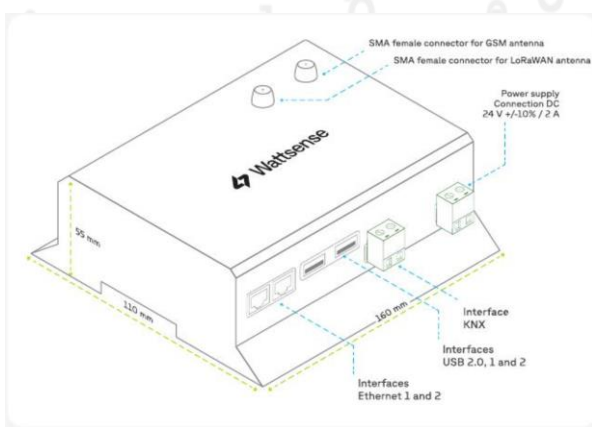
The Bridge



Universal IoT Gateway

Collect data on-premises or through your private Cloud network

Hardware	
CPU	528MHz ARM Cortex A7
Memory	512MB RAM
Storage	4GB Flash
Consumption	5 Watt
Dimension	160 x 110 x 55 mm
Weight	340g
Operating temperature	0 ° C to + 45 ° C
Humidity	5% to 95% humidity - No condensation
Power supply	12-24V DC +/-10%, 2A 2 wires (red, black), 22 AWG, Minimum: 0.35 mm ²
Link to Wattsense Compatibility checker	Equipment library: quickly check if your equipment has already been decoded Wattsense - Wattsense



The Tower

MQTT

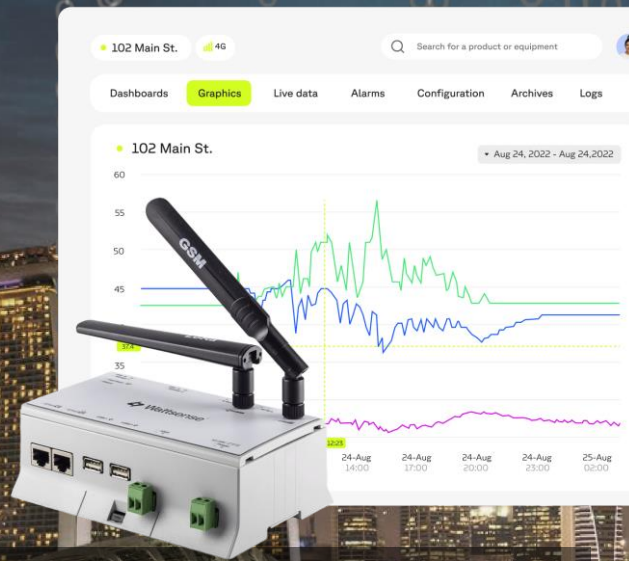
KNX

Modbus

BACnet

M-Bus

LoRaWAN



Universal IoT Gateway with Cloud Console

Access data and monitor your building from anywhere

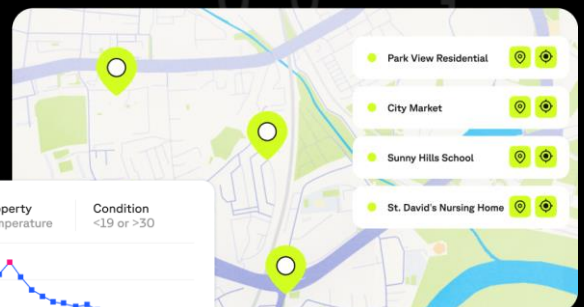
The **Tower** provides a powerful easy to configure Cloud console, monitoring conventional as well as emerging wireless devices.

The **Tower** supports integration of protocols such as: LoRa, M-BUS, KNX, LON IP, Modbus IP/RTU and BACnet IP.

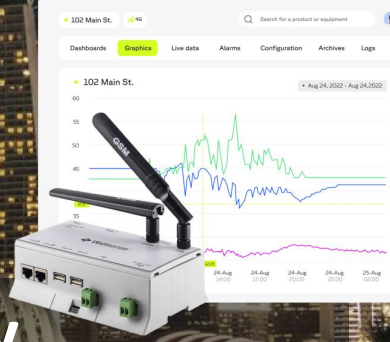
The **Tower** provides a RESTful API and MQTT on a cloud level for easy data interaction, cloud-to-cloud connectivity, etc.

The **Tower** library supports:

- An impressive range of more than 700 devices.
- Automated decoding of LoRa payloads locally in the **Tower** gateway.



The Tower



Universal IoT Gateway

Access data and monitor your building from anywhere

Tower subscriptions - Choose a plan that's right for your building.

Most popular

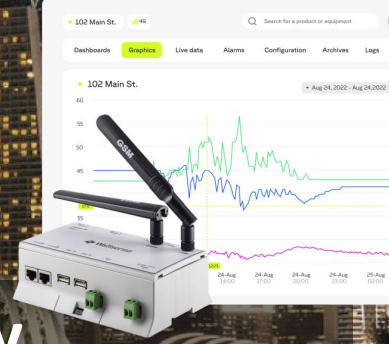
IoT	Small	Medium	Large
Take the first step into IoT integration	Digitally transform small buildings	Scale with more data access	Take building management to the next level
<ul style="list-style-type: none"> LoRaWAN connectivity Local server Data points included: 100 included, Up to 200 optional 4G SIM card & data plan Alarms, schematics, graphs Configuration wizard Devices fleet management API integration 	<ul style="list-style-type: none"> Everything in IoT, plus Wired connectivity for meters 	<ul style="list-style-type: none"> Everything in Small, plus Wired connectivity for all equipment Points included: 200 included, Up to 400 optional Satellite Option 	<ul style="list-style-type: none"> Everything in Medium, plus Points included: 1 000 included, Up to 10 000 optional Satellite Option



Specifications are according to the manufacturer and might change without any notice



The Tower



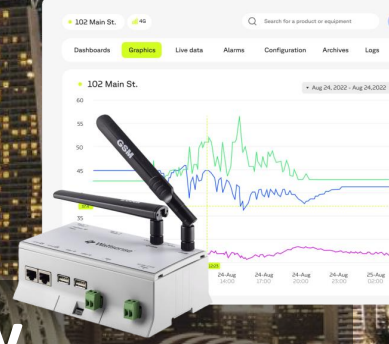
Universal IoT Gateway

Access data and monitor your building from anywhere

IN Protocols (Client) <ul style="list-style-type: none">LoRaWANBACnet IPModbusKNXM-BUSLONLPBDiematic	OUT Protocols (Server) <ul style="list-style-type: none">BACnet IPModbus IPMQTT
Interfaces <ul style="list-style-type: none">LoRaWAN module 863MHz to 928MHzKNXM-BusLPB/BSB3G/4G Modem2 Ethernet ports RJ452 RS4852 USBUSB Micro	Drivers <ul style="list-style-type: none">LoRaWAN 1.0 local privateBACnet IP, BACnet IP ServerModbus TCP/IPMQTT ClientKNX S and LTEModbus RTULON FT10, LON IP-852M-BuswM-BusLPBDiematic
Software <ul style="list-style-type: none">Secured Linux Yocto distributionOnboard LoRaWAN server decodes LoRa data <u>locally</u> directly in the TowerAutomatic discovery of BACnet objectsEasy configuration via remote consoleScheduler wizard	Security <p>The Tower optionally connects to your MQTT broker with highest level of security based on SSL/TLS, with the following properties:</p> <ul style="list-style-type: none">Two-way authentication between the Tower and server with x509 certificatesEnd-to-end encryption, integrity checks

Specifications are according to the manufacturer and might change without any notice

The Tower



Universal IoT Gateway

Collect data on-premises or through your private Cloud network

Hardware	
CPU	528MHz ARM Cortex A7
Memory	512MB RAM
Storage	4GB Flash
Consumption	5 Watt
Dimension	160 x 110 x 55 mm
Weight	340g
Operating temperature	0 ° C to + 45 ° C
Humidity	5% to 95% humidity - No condensation
Power supply	12-24V DC +/-10%, 2A 2 wires (red, black), 22 AWG, Minimum: 0.35 mm ²
Link to Wattsense Compatibility checker	Equipment library: quickly check if your equipment has already been decoded Wattsense - Wattsense

